

# RC25 APRS TRACKER KASAUS OHJE

|               |      |
|---------------|------|
| R1,R8         | 27k  |
| R2,R5,R10,R11 | 10k  |
| R3,R7         | 6k8  |
| R4            | 10M  |
| R6            | 2k2  |
| R9            | 240k |

|             |         |
|-------------|---------|
| R12,R13,R14 | 680 ohm |
| C1,C2,C3,C6 | 100nF   |
| C4,C5       | 18pF    |

|       |       |
|-------|-------|
| C7,C8 | 100uF |
|-------|-------|

|       |        |
|-------|--------|
| T1,T2 | 2N7000 |
|-------|--------|

|       |        |
|-------|--------|
| D1,D2 | 1N4148 |
|-------|--------|

D3 TX Led RED

D4 RX Led GREEN

X1 Crystal 29,4912MHz

IC1 7805 5V Regulator

IC2 LM335Z temp sensor

IC3 MC908JL16CSPE

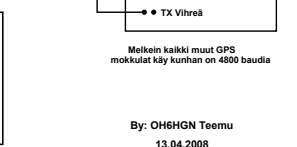
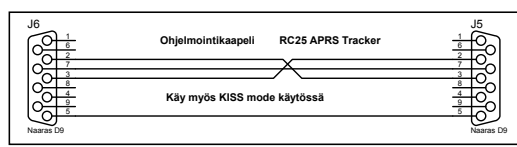
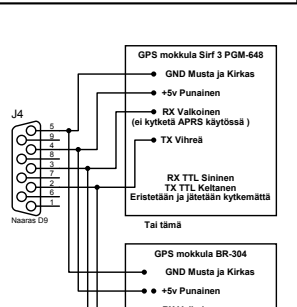
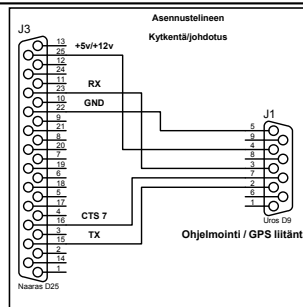
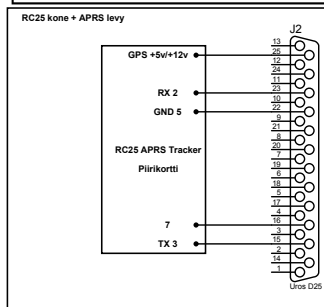
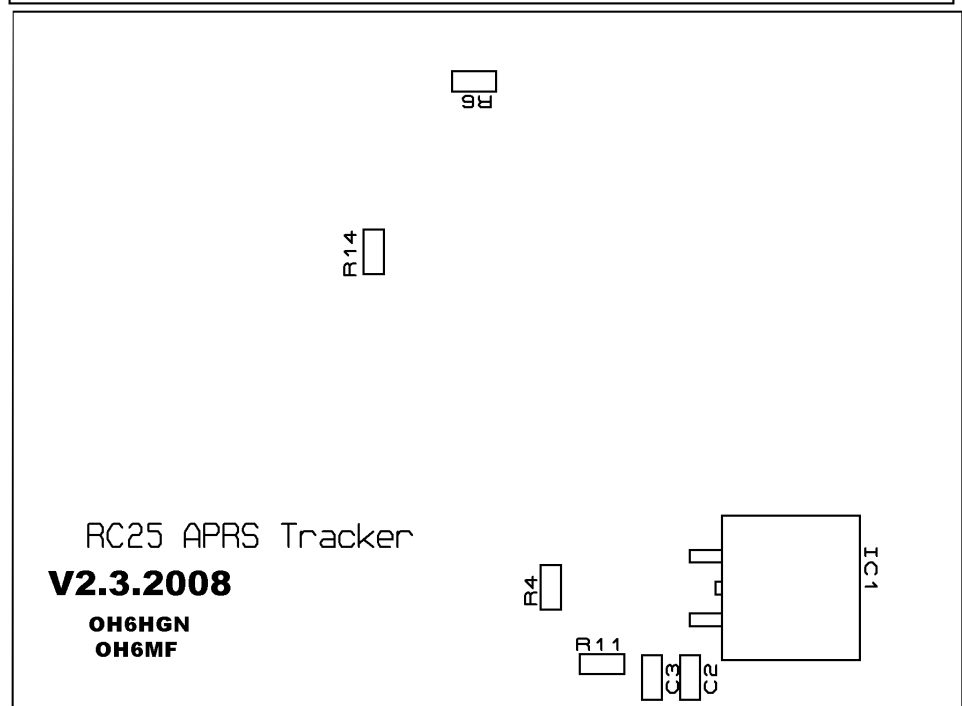
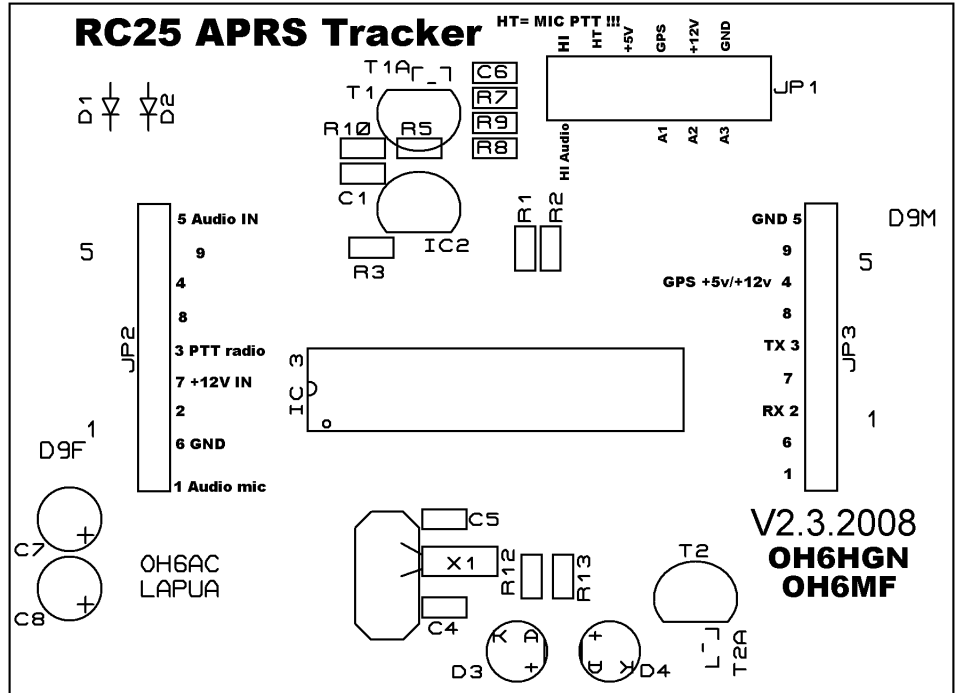
JP1 2x7 pin header

JP2,JP3 1x9 pin  
single row square male  
(+ 2 kpl 1x9 pin  
single row square female)

D9F D9 connector female

D9M D9 connector male

2 kpl Shunt jumper



By: OH6HGN Teemu Pirttinen  
Versio 1304-2008

By: OH6HGN Teemu  
13.04.2008